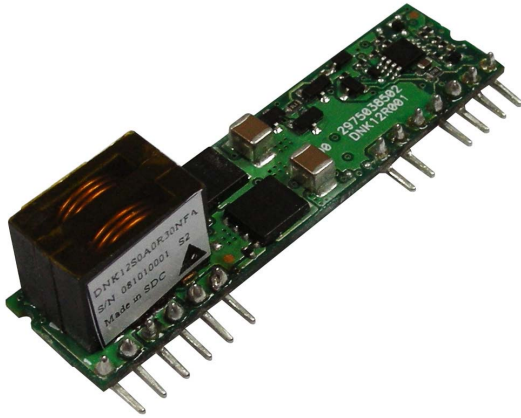


DELPHI SERIES



FEATURES

- ♦ High efficiency: 95% @ 5Vin, 3.3V/30A out (SIP)
- ♦ Small size and low profile: 50.8x12.7x14.0 mm (2.00"x0.50"x0.55")
- ♦ Standard footprint
- ♦ Pre-bias startup
- ♦ Output voltage tracking
- ♦ No minimum load required
- ♦ Voltage and resistor-based trim
- ♦ Output voltage programmable from 0.8Vdc to 3.63Vdc via external resistor
- ♦ Fixed frequency operation
- ♦ Input UVLO, Output OTP, OCP
- ♦ Remote ON/OFF
- ♦ Remote sense
- ♦ Current sharing (optional)
- ♦ ISO 9000, TL 9000, ISO 14001 certified manufacturing facility
- ♦ UL/cUL 60950-1 (US & Canada) recognized

Delphi Series DNK05, Non-Isolated, Point of Load DC/DC Power Modules:

4.5~5.5Vin, 0.8V~3.63V/30Aout

The Delphi series DNK05, 4.5V~5.5V input, single output, non-isolated point of load DC/DC converters are the latest offering from a world leader in power systems technology and manufacturing -- Delta Electronics, Inc. The DNK05 series provides a programmable output voltage from 0.8V to 3.63V by using an external resistor. The DNK converters have flexible and programmable tracking and sequencing features to enable a variety of startup voltages as well as sequencing and tracking between power modules. This product family is available in a surface mount or SIP package and provides up to 30A of current in an industry standard footprint. With creative design technology and optimization of component placement, these converters possess outstanding electrical and thermal performance and extremely high reliability under highly stressful operating conditions.

APPLICATIONS

- ♦ Telecom / DataCom
- ♦ Distributed power architectures
- ♦ Servers and workstations
- ♦ LAN / WAN applications
- ♦ Data processing applications

DATASHEET
DS_DNK05SIP_06042012

TECHNICAL SPECIFICATIONS

T_A = 25°C, airflow rate = 300 LFM, V_{in} = 10Vdc and 14Vdc, nominal V_{out} unless otherwise noted.

| PARAMETER | NOTES and CONDITIONS | DNK05S0A0R30 | | | |
|--|--|--------------|--------------------|---------------------|----------------------|
| | | Min. | Typ. | Max. | Units |
| ABSOLUTE MAXIMUM RATINGS | | | | | |
| Input Voltage (Continuous) | | 0 | | 15 | Vdc |
| Tracking Voltage | | 0 | | V _{in,max} | Vdc |
| Operating Ambient Temperature | | -40 | | 85 | °C |
| Storage Temperature | | -55 | | 125 | °C |
| INPUT CHARACTERISTICS | | | | | |
| Operating Input Voltage | V _o <=3.3V / V _o >3.3V | 4.5 | 5 | 5.5 | V |
| Input Under-Voltage Lockout | | | | | |
| Turn-On Voltage Threshold | | | 5.2 | | V |
| Turn-Off Voltage Threshold | | | 4.8 | | V |
| Maximum Input Current | V _{in} =V _{in,min} to V _{in,max} , I _o =I _{o,max} | | | 27 | A |
| No-Load Input Current | | | 150 | | mA |
| Off Converter Input Current | | | 25 | | mA |
| Inrush Transient | V _{in} = V _{in,min} to V _{in,max} , I _o =I _{o,min} to I _{o,max} | | | 1 | A ² S |
| Recommended Input Fuse | | | 50 | | A |
| OUTPUT CHARACTERISTICS | | | | | |
| Output Voltage Set Point | V _{in} =12V, I _o =I _{o,max} | -1.5 | V _{o,set} | +1.5 | % V _{o,set} |
| Output Voltage Adjustable Range | | 0.8 | | 5.5 | V |
| Over Load | I _o =I _{o,min} to I _{o,max} | | | 0.4 | % V _{o,set} |
| Total Output Voltage Range | Over sample load, line and temperature | -3.0 | | +3.0 | % V _{o,set} |
| Output Voltage Ripple and Noise | 5Hz to 20MHz bandwidth with 0.01uF//0.1uF//10uF ceramic | | | | |
| Peak-to-Peak | V _{in} = V _{in,min} to V _{in,max} , I _o =I _{o,min} to I _{o,max} | | 35 | | mV |
| RMS | V _{in} = V _{in,min} to V _{in,max} , I _o =I _{o,min} to I _{o,max} | | 8 | | mV |
| Output Current Range | | 0 | | 30 | A |
| Output Voltage Over-shoot at Start-up | | | | 5 | % V _{o,set} |
| Output DC Current-Limit Inception | | | 160 | | % I _o |
| Output Short-Circuit Current (Hiccup mode) | I _{o,s/c} | | 6 | | Adc |
| DYNAMIC CHARACTERISTICS | | | | | |
| Dynamic Load Response | 10uF Tan & 1uF ceramic load cap, 1A/μs, 5Vout | | | | |
| Positive Step Change in Output Current | 0% I _{o,max} to 50% I _{o,max} | | | 350 | mV |
| Negative Step Change in Output Current | 50% I _{o,max} to 0% I _{o,max} | | | 350 | mV |
| Setting Time to 10% of Peak Deviation | | | 25 | | μs |
| Turn-On Transient | I _o =I _{o,max} | | | | |
| Start-Up Time, From On/Off Control | V _{on/off} , V _o =10% of V _{o,set} | | 3 | | ms |
| Start-Up Time, From Input | V _{in} =V _{in,min} , V _o =10% of V _{o,set} | | 3 | | ms |
| Output Voltage Rise Time | Time for V _o to rise from 10% to 90% of V _{o,set} | | 4 | | ms |
| Maximum Output Startup Capacitive Load | Full load; ESR 1mΩ | | | 2000 | μF |
| | Full load; ESR 10mΩ | | | 10000 | μF |
| EFFICIENCY | | | | | |
| V _o =0.8V | V _{in} =5V, I _o =I _{o,max} | | 82 | | % |
| V _o =1.2V | V _{in} =5V, I _o =I _{o,max} | | 87 | | % |
| V _o =1.5V | V _{in} =5V, I _o =I _{o,max} | | 89 | | % |
| V _o =1.8V | V _{in} =5V, I _o =I _{o,max} | | 90.5 | | % |
| V _o =2.5V | V _{in} =5V, I _o =I _{o,max} | | 93 | | % |
| V _o =3.3V | V _{in} =5V, I _o =I _{o,max} | | 94 | | % |
| FEATURE CHARACTERISTICS | | | | | |
| Switching Frequency | | | 300 | | kHz |
| ON/OFF Control, (Negative logic) | | | | | |
| Logic Low Voltage | Module On, V _{on/off} | -0.2 | | 1.2 | V |
| Logic High Voltage | Module Off, V _{on/off} | 3 | | V _{in,max} | V |
| Logic Low Current | Module On, I _{on/off} | | 0.2 | 10 | μA |
| Logic High Current | Module Off, I _{on/off} | | 0.2 | 1 | mA |
| Tracking Slew Rate Capability | | 0.1 | | 2 | V/msec |
| Tracking Delay Time | Delay from V _{in,min} to application of tracking voltage | 10 | | | ms |
| Tracking Accuracy | Power-up, subject to 2V/mS | | 100 | 200 | mV |
| | Power-down, subject to 1V/mS | | 200 | 400 | mV |
| Remote Sense Range | | | | 0.5 | V |
| GENERAL SPECIFICATIONS | | | | | |
| MTBF | I _o =I _{o,max} , T _a =25 | | 5.0 | | M hours |
| Weight | | | 10 | | grams |
| Over-Temperature Shutdown (Hot Spot) | Refer to Figure 43 for Hot spot location (12V _{in} , 80%I _o , 200LFM, Airflow from Pin1 to Pin13) | | 135 | | °C |
| Over-Temperature Shutdown (NTC Resistor) | Refer to Figure 43 for NTC resistor location | | 130 | | °C |
| Note: Please attach thermocouple on NTC resistor to test OTP function, the hot spot's temperature is just for reference. | | | | | |



ELECTRICAL CHARACTERISTICS CURVES

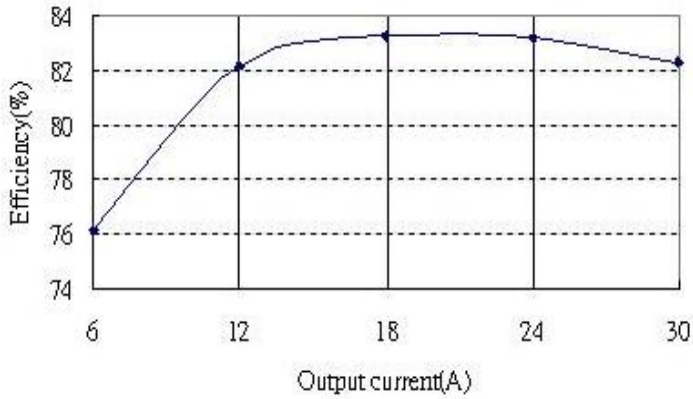


Figure 1: Converter efficiency vs. output current (0.8V output voltage)

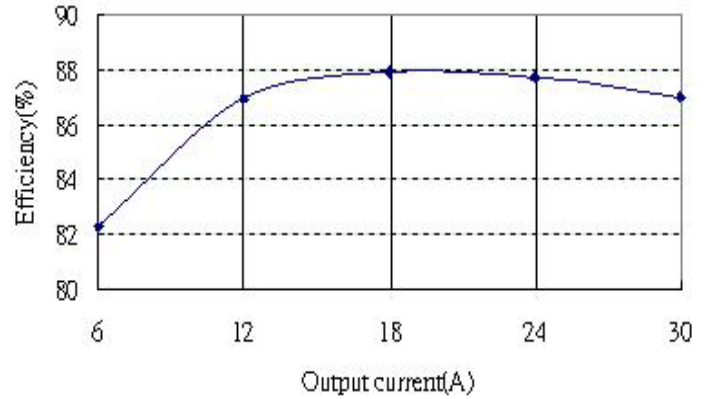


Figure 2: Converter efficiency vs. output current (1.2V output voltage)

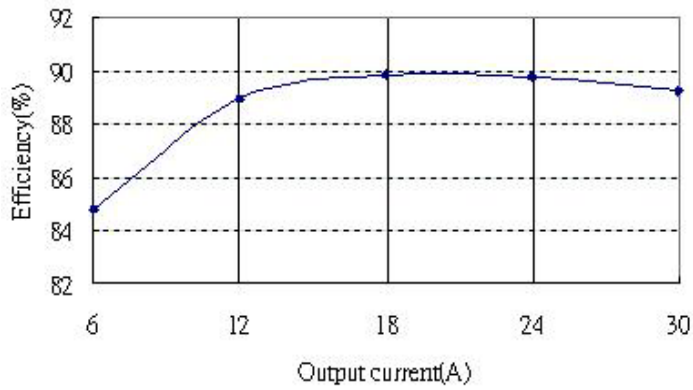


Figure 3: Converter efficiency vs. output current (1.5V output voltage)

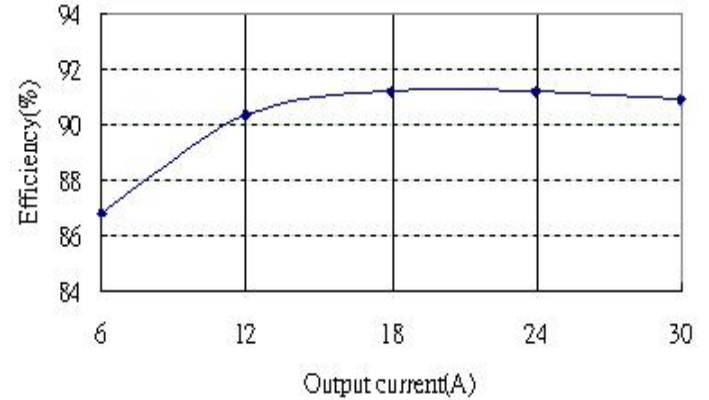


Figure 4: Converter efficiency vs. output current (1.8V output voltage)

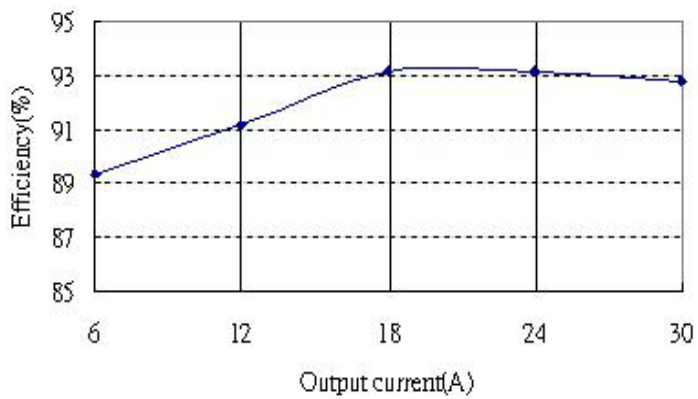


Figure 5: Converter efficiency vs. output current (2.5V output voltage)

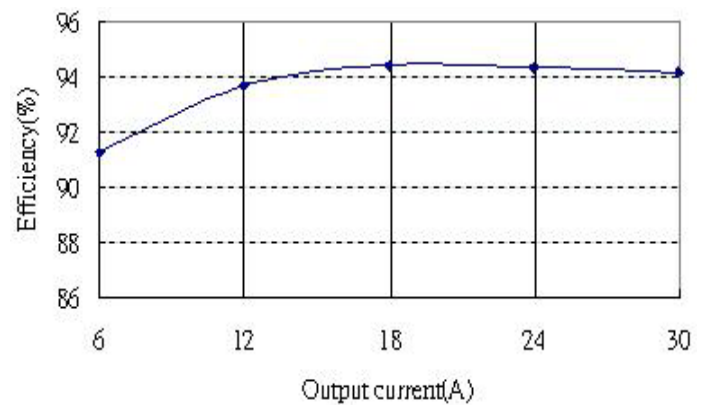


Figure 6: Converter efficiency vs. output current (3.3V output voltage)

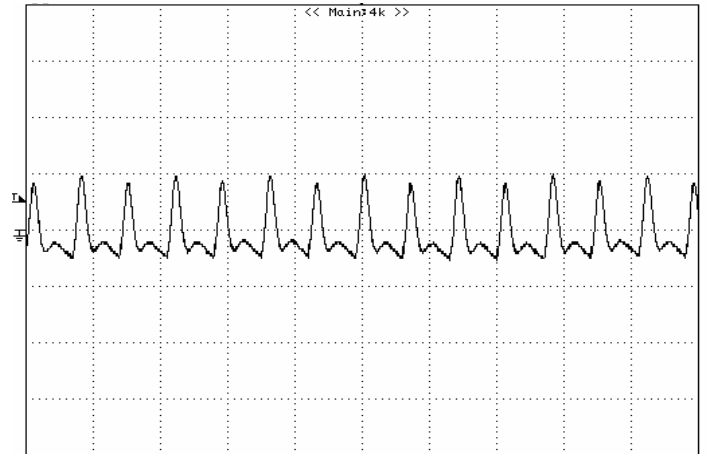


Figure 8: Output ripple & noise at 12V_{in}, 0.8V/30A out
20mV/div, 2 μ S/div

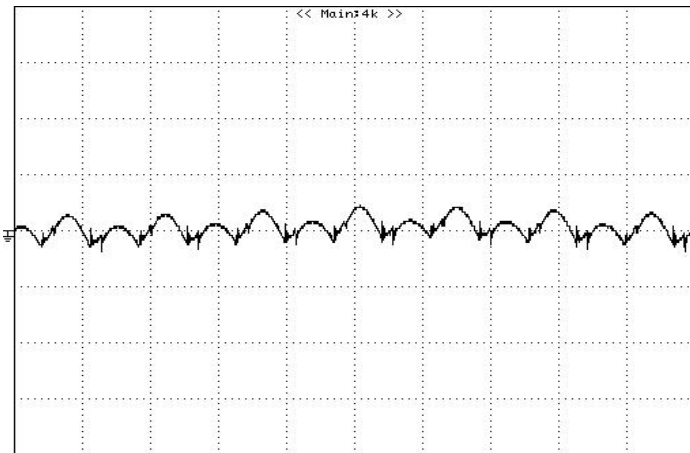


Figure 9: Output ripple & noise at 12V_{in}, 1.2V/30A out
20mV/div, 2 μ S/div

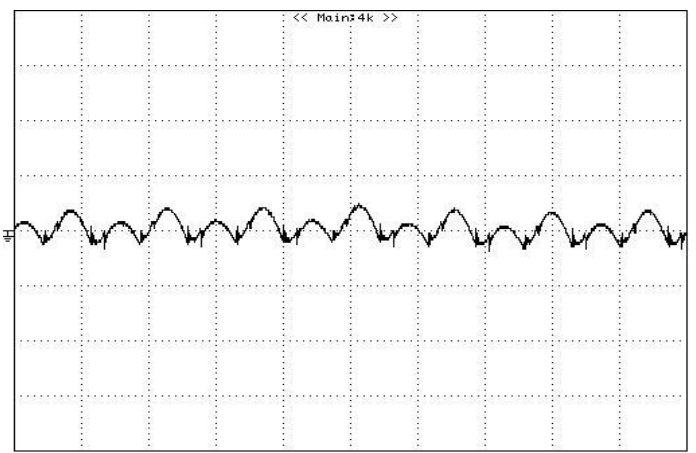


Figure 10: Output ripple & noise at 12V_{in}, 1.5V/30A out
20mV/div, 2 μ S/div

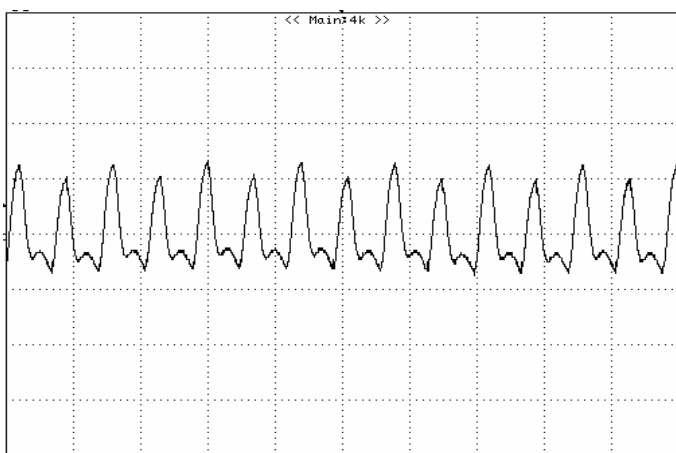


Figure 11: Output ripple & noise at 12V_{in}, 1.8V/30A out
20mV/div, 2 μ S/div

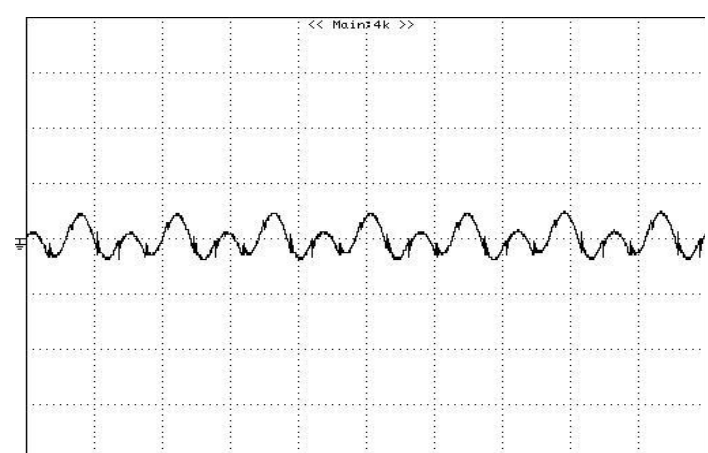


Figure 12: Output ripple & noise at 12V_{in}, 2.5V/30A out
20mV/div, 2 μ S/div

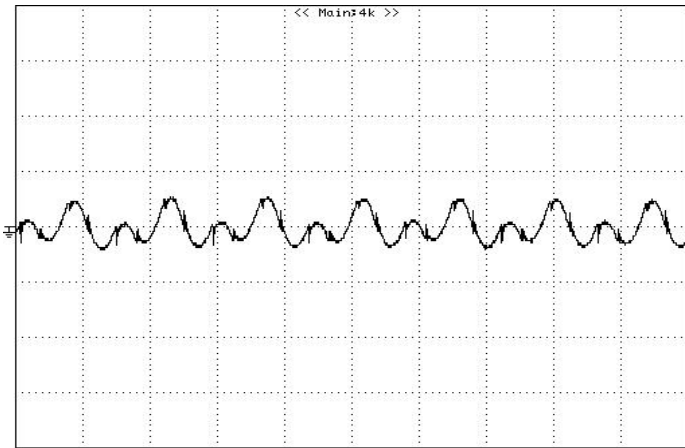


Figure 13: Output ripple & noise at 12Vin, 3.3V/30A out
20mV/div, 2uS/div

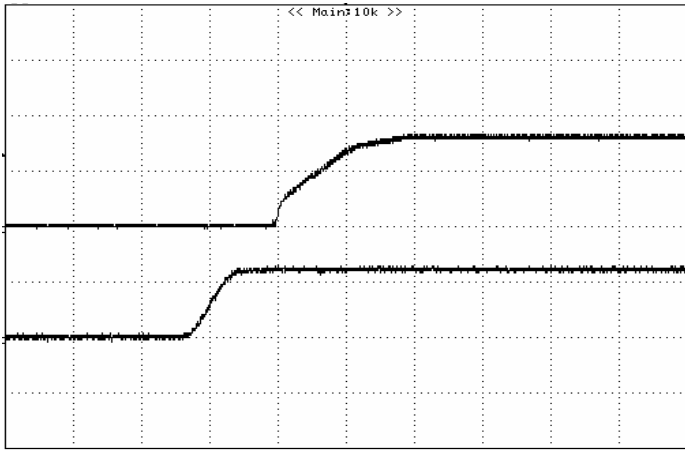


Figure 15: Turn on delay time at 12vin, 0.8V/30A out
Top: 0.5V/div, 2ms/div, Bottom: 10V/div, 2ms/div

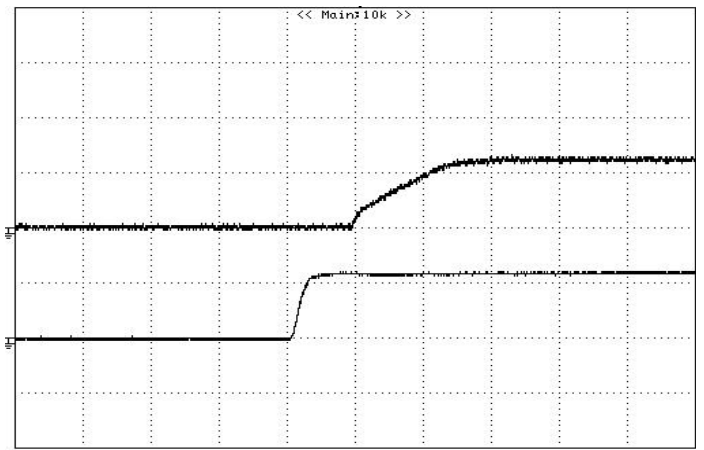


Figure 16: Turn on delay time at 12vin, 1.2V/30A out
Top: 1V/div, 2ms/div, Bottom: 10V/div, 2ms/div

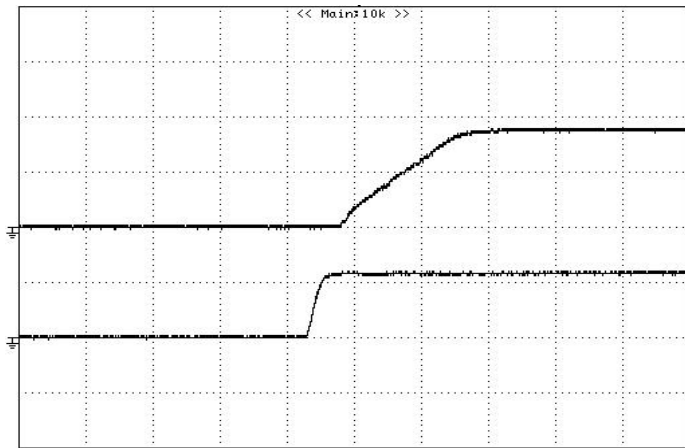


Figure 17: Turn on delay time at 12vin, 3.3V/30A out
Top: 2V/div, 2ms/div, Bottom: 10V/div, 2ms/div

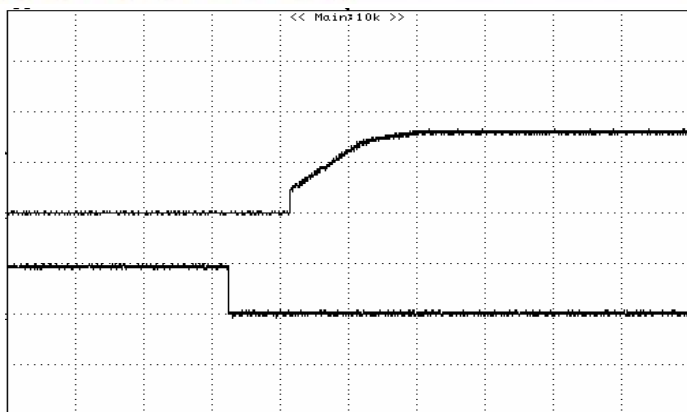


Figure 19: Turn on delay time at Remote On/Off, 0.8V/30A out
Top: 0.5V/div, 2ms/div, Bottom: 10V/div, 2ms/div

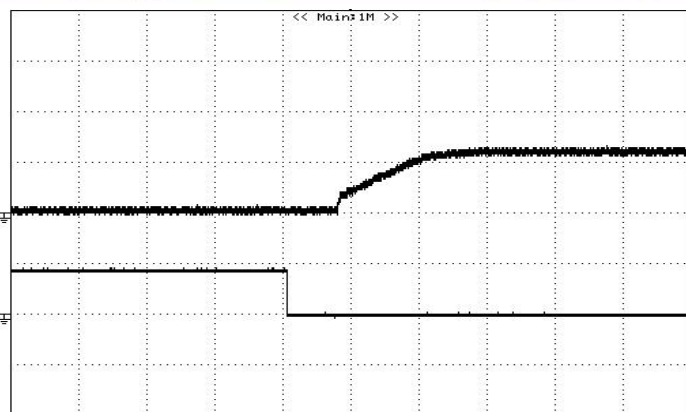


Figure 20: Turn on delay time at Remote On/Off, 1.2V/30A out
Top: 1V/div, 2ms/div, Bottom: 10V/div, 2ms/div

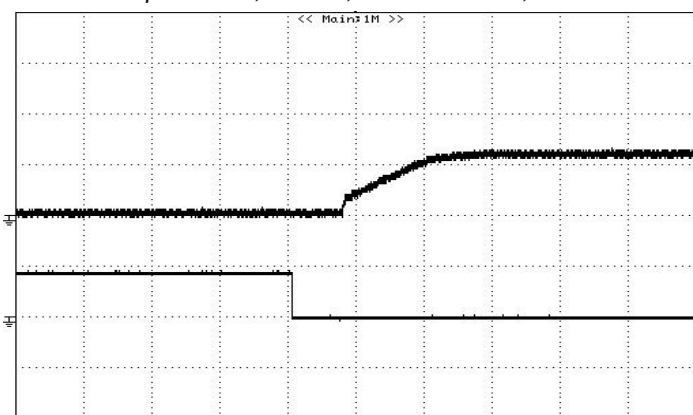


Figure 21: Turn on delay time at Remote On/Off, 3.3V/30A out
Top: 2V/div, 2ms/div, Bottom: 10V/div, 2ms/div

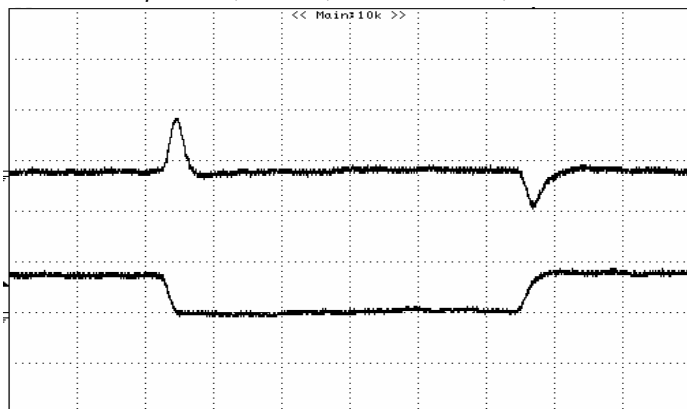


Figure 23: Typical transient response to step load change at 1A/μS from 25% to 75% of I_o , max at 12Vin, 0.8V out
($C_{out} = 1\mu F$ ceramic, 10μF tantalum)
Top: 100mV/div, 50μS/div, Bottom: 20A/div, 50μS/div

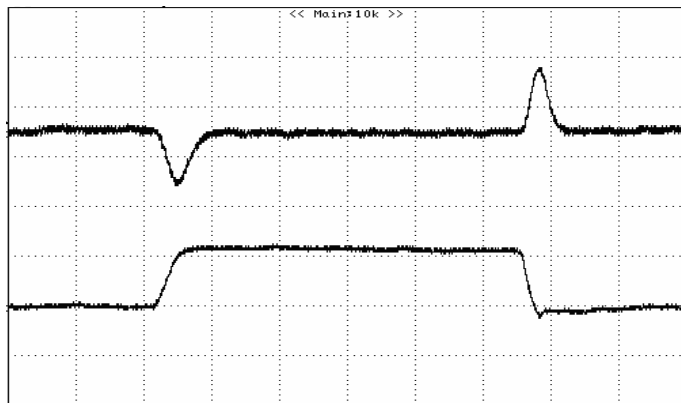


Figure 24: Typical transient response to step load change at 1A/μS from 25% to 75% of I_o , max at 12Vin, 1.2V out
($C_{out} = 1\mu F$ ceramic, 10μF tantalum)
Top: 100mV/div, 50μS/div, Bottom: 20A/div, 50μS/div



ELECTRICAL CHARACTERISTICS CURVES

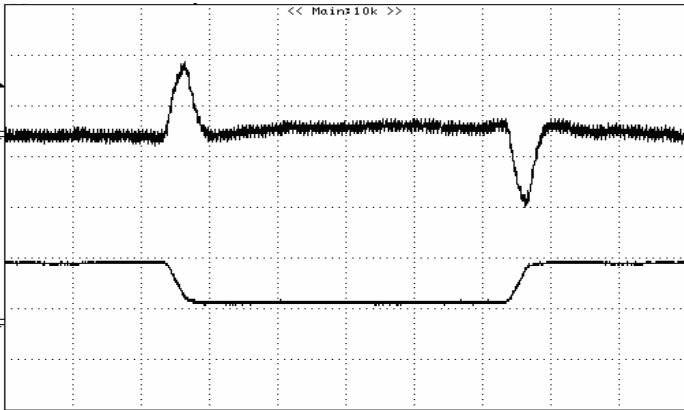


Figure 25: Typical transient response to step load change at $5A/\mu S$ from 25% to 75% of I_o , max at $12V_{in}$, $3.3V$ out ($C_{out} = 1\mu F$ ceramic, $10\mu F$ tantalum)
Top: $100mV/div$, $50\mu S/div$, Bottom: $20A/div$, $50\mu S/div$

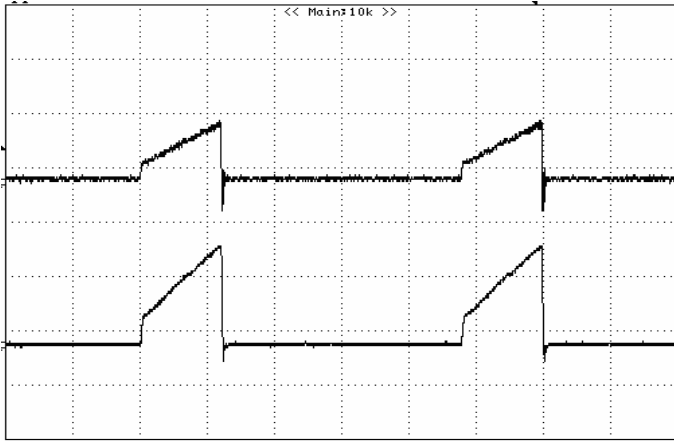


Figure 27: Output short circuit current $12V_{in}$, $1.2V_{out}$
Top: $1V/div$, $5ms/div$, Bottom: $20A/div$, $5ms/div$

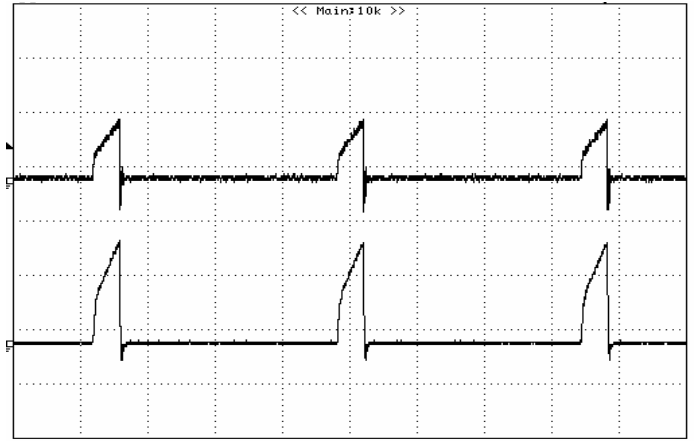


Figure 28: Output short circuit current $12V_{in}$, $3.3V_{out}$
Top: $1V/div$, $5ms/div$, Bottom: $20A/div$, $5ms/div$

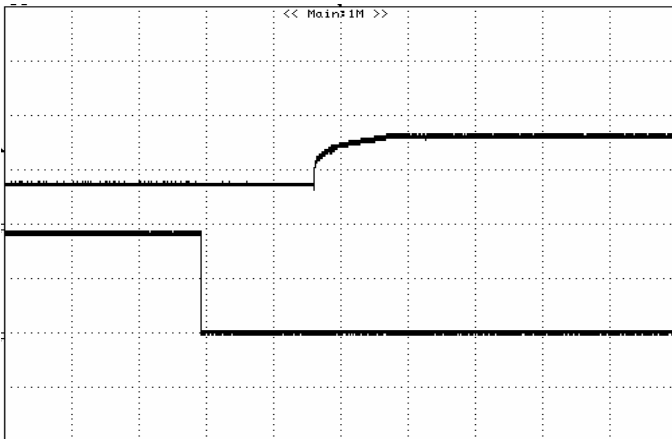


Figure 29: Turn on with Prebias $12V_{in}$, $0.8V/0A$ out, $V_{bias} = 0.5V_{dc}$
Top: $0.5V/div$, $2ms/div$, Bottom: $5V/div$, $2ms/div$

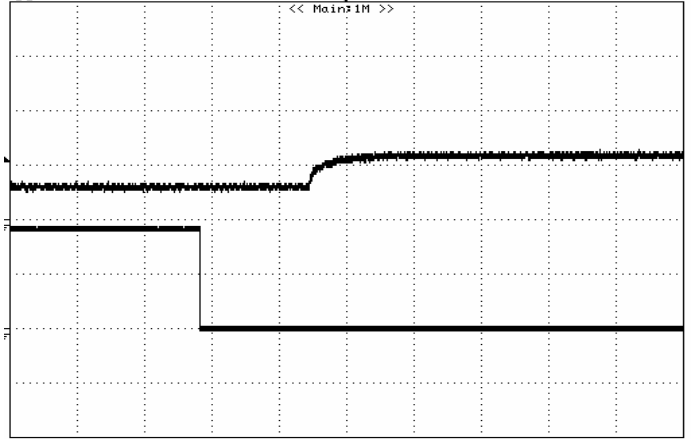


Figure 30: Turn on with Prebias $12V_{in}$, $1.2V/0A$ out, $V_{bias} = 0.79V_{dc}$
Top: $1V/div$, $2ms/div$, Bottom: $5V/div$, $2ms/div$

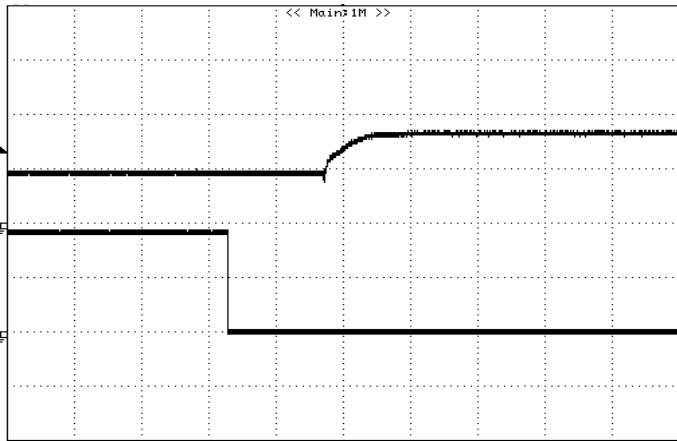
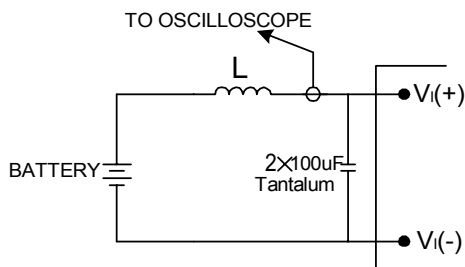


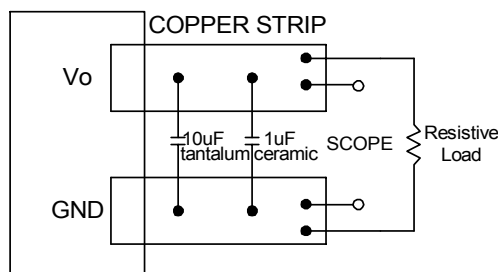
Figure 31: Turn on with Prebias 12Vin,3.3V/0A out, Vbias =-2.2Vdc
Top: 2V/div, 2ms/div, Bottom: 5V/div, 2ms/div

TEST CONFIGURATIONS



Note: Input reflected-ripple current is measured with a simulated source inductance. Current is measured at the input of the module.

Figure 33: Input reflected-ripple test setup



Note: Use a 10µF tantalum and 1µF capacitor. Scope measurement should be made using a BNC connector.

Figure 34: Peak-peak output noise and startup transient measurement test setup

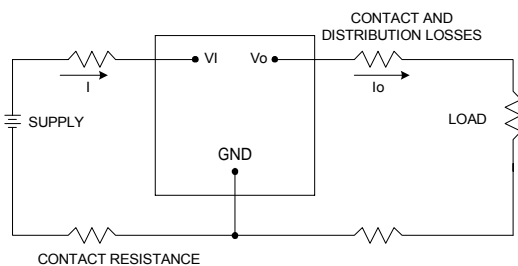


Figure 35: Output voltage and efficiency measurement test setup

Note: All measurements are taken at the module terminals. When the module is not soldered (via socket), place Kelvin connections at module terminals to avoid measurement errors due to contact resistance.

$$\eta = \left(\frac{V_o \times I_o}{V_i \times I_i} \right) \times 100 \quad \%$$

DESIGN CONSIDERATIONS

Safety Considerations

For safety-agency approval the power module must be installed in compliance with the spacing and separation requirements of the end-use safety agency standards.

For the converter output to be considered meeting the requirements of safety extra-low voltage (SELV), the input must meet SELV requirements. The power module has extra-low voltage (ELV) outputs when all inputs are ELV.

The input to these units is to be provided with a maximum 50A of glass type fast-acting fuse in the ungrounded lead.

Input Source Impedance

The power module should be connected to a low ac-impedance input source. Highly inductive source impedances can affect the stability of the module. An input capacitance must be placed close to the modules input pins to filter ripple current and ensure module stability in the presence of inductive traces that supply the input voltage to the module.

FEATURES DESCRIPTIONS

Remote On/Off

The DNK series power modules have an On/Off pin for remote On/Off operation. Only negative On/Off logic option is available in the DNK series power modules.

For negative logic module, the On/Off pin is suggested to be pulled high with an external pull-up resistor (see figure 36). Negative logic On/Off signal turns the module OFF during logic high and turns the module ON during logic low. If the negative On/Off function is not used, leave the pin floating or tie to GND. (module will be On)

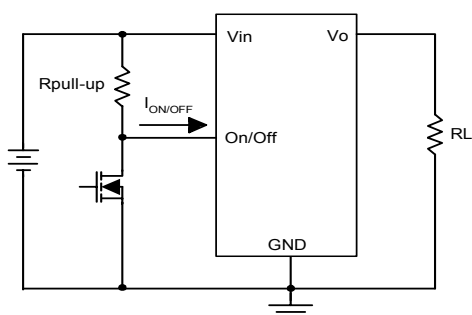


Figure 36: Negative remote On/Off implementation

Over-Current Protection

To provide protection in an output over load fault condition, the unit is equipped with internal over-current protection. When the over-current protection is triggered, the unit enters hiccup mode. The units operate normally once the fault condition is removed.

Over-Temperature Protection

The over-temperature protection consists of circuitry that provides protection from thermal damage. If the temperature exceeds the over-temperature threshold the module will shut down. The module will restart once the temperature is within specification

Remote Sense

The DNK provide Vo remote sensing to achieve proper regulation at the load points and reduce effects of distribution losses on output line. In the event of an open remote sense line, the module shall maintain local sense regulation through an internal resistor.

FEATURES DESCRIPTIONS (CON.)

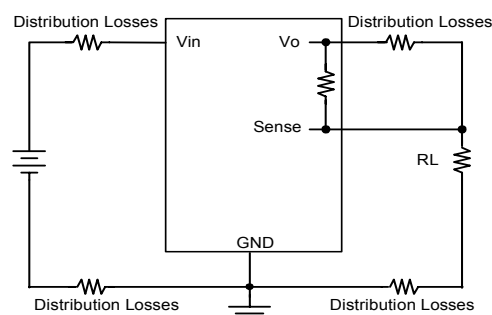


Figure 37: Effective circuit configuration for remote sense operation

Output Voltage Programming

The output voltage of the DNK can be programmed to any voltage between 0.8Vdc and 5.5Vdc by connecting one resistor (shown as Rtrim in Figure 38) between the TRIM and GND pins of the module. Without this external resistor, the output voltage of the module is 0.8 Vdc. To calculate the value of the resistor Rtrim for a particular output voltage Vo, please use the following equation:

$$R_{trim} := \left(\frac{1200}{V_o - 0.80} - 100 \right) \cdot \Omega$$

Rtrim is the external resistor in Ω
Vo is the desired output voltage

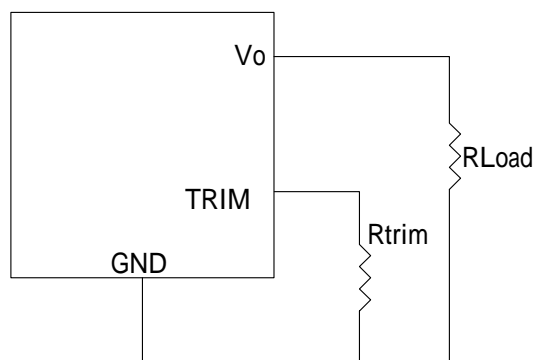


Figure 38: Circuit configuration for programming output voltage using an external resist

FEATURES DESCRIPTIONS (CON.)

Table 1 provides Rtrim values required for some common output voltages. By using a 0.5% tolerance trim resistor, set point tolerance of $\pm 1.5\%$ can be achieved as specified in the electrical specification.

Table 1

| VO (V) | Rtrim (Ω) |
|--------|--------------------|
| 0.8 | Open |
| 1.2 | 2900 |
| 1.5 | 1614 |
| 1.8 | 1100 |
| 2.5 | 606 |
| 3.3 | 380 |
| 5.0 | 185.7 |

Voltage Margining

Output voltage margining can be implemented in the DNK modules by connecting a resistor, $R_{\text{margin-up}}$, from the Trim pin to the ground pin for margining-up the output voltage and by connecting a resistor, $R_{\text{margin-down}}$, from the Trim pin to the output pin for margining-down. Figure 39 shows the circuit configuration for output voltage margining. If unused, leave the trim pin unconnected. A calculation tool is available from the evaluation procedure which computes the values of $R_{\text{margin-up}}$ and $R_{\text{margin-down}}$ for a specific output voltage and margin percentage.

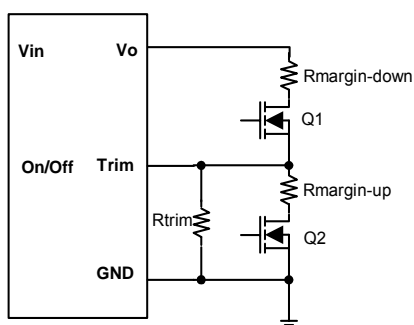


Figure 39: Circuit configuration for output voltage margining

FEATURES DESCRIPTIONS (CON.)

Voltage Tracking

The DNK family was designed for applications that have output voltage tracking requirements during power-up and power-down. The devices have a TRACK pin to implement three types of tracking method: sequential, simultaneous and ratio-metric. TRACK simplifies the task of supply voltage tracking in a power system by enabling modules to track each other, or any external voltage, during power-up and power-down.

By connecting multiple modules together, customers can get multiple modules to track their output voltages to the voltage applied on the TRACK pin.

The DNK family has option code A for TRACK function. The output voltage Track characteristic can be achieved when the output voltage of PS2 follows the output voltage of PS1 on a volt-to-volt basis.

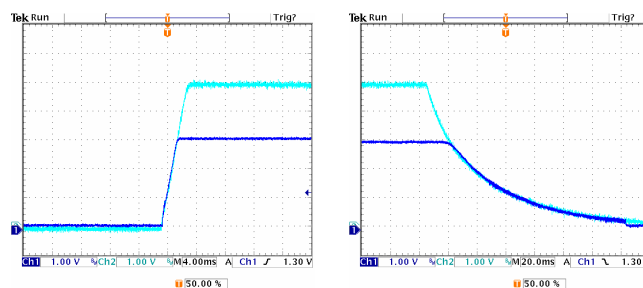


Figure 40: Simultaneous tracking

Simultaneous tracking (Figure 40) is implemented by using a voltage divider around the TRACK pin. The objective is to minimize the voltage difference between the power supply outputs during power up and down.

For type A (DNX0A0XXXX A), the simultaneous tracking can be accomplished by connecting VO_{PS1} to the TRACK pin of PS2 where the voltage divider is inside the PS2.



THERMAL CONSIDERATIONS

Thermal management is an important part of the system design. To ensure proper, reliable operation, sufficient cooling of the power module is needed over the entire temperature range of the module. Convection cooling is usually the dominant mode of heat transfer.

Hence, the choice of equipment to characterize the thermal performance of the power module is a wind tunnel.

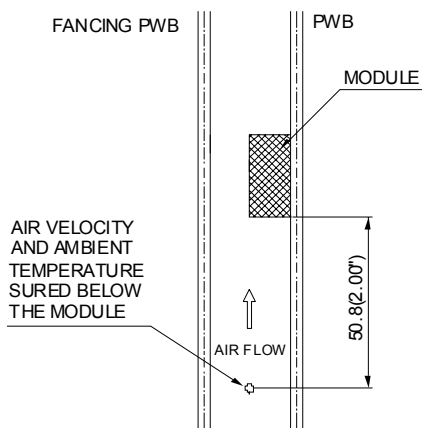
Thermal Testing Setup

Delta's DC/DC power modules are characterized in heated vertical wind tunnels that simulate the thermal environments encountered in most electronics equipment. This type of equipment commonly uses vertically mounted circuit cards in cabinet racks in which the power modules are mounted.

The following figure shows the wind tunnel characterization setup. The power module is mounted on a test PWB and is vertically positioned within the wind tunnel. The height of this fan duct is constantly kept at 25.4mm (1").

Thermal Derating

Heat can be removed by increasing airflow over the module. To enhance system reliability, the power module should always be operated below the maximum operating temperature. If the temperature exceeds the maximum module temperature, reliability of the unit may be affected.



Note: Wind Tunnel Test Setup Figure Dimensions are in millimeters and (Inches)

Figure 42: Wind tunnel test setup

THERMAL CURVES

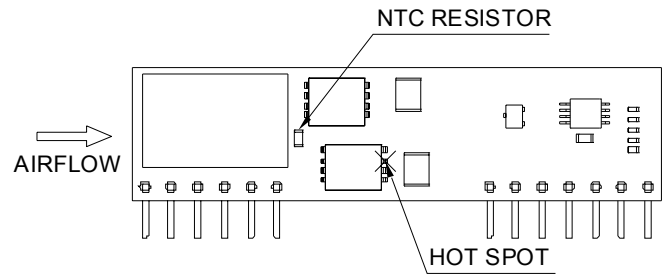


Figure 43: * Hot spot & NTC resistor temperature measured points.

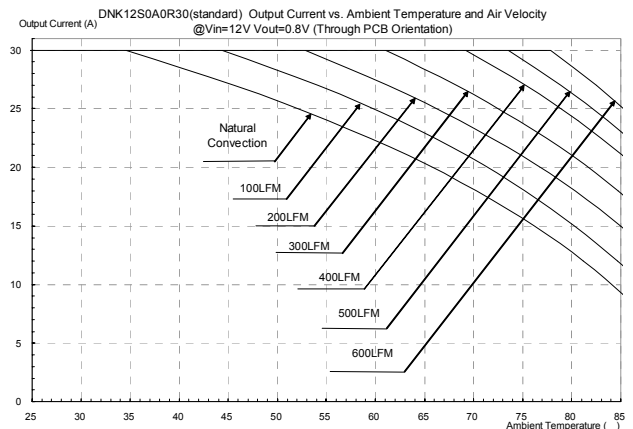


Figure 44: Output current vs. ambient temperature and air velocity @ Vin=12V, Vout=0.8V (Through PCB Orientation, Airflow from Pin1 to Pin13)

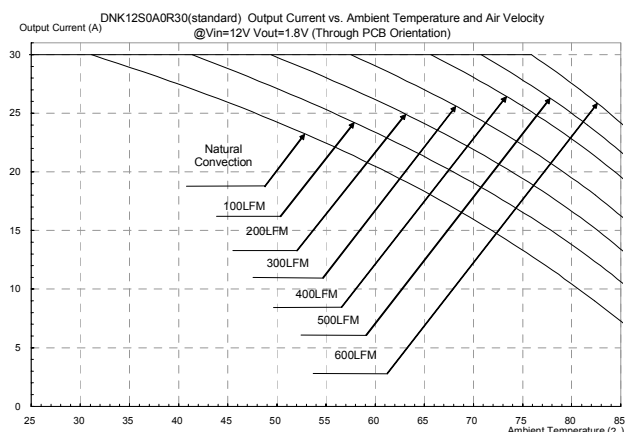


Figure 45: Output current vs. ambient temperature and air velocity @ Vin=12V, Vout=1.8V (Through PCB Orientation, Airflow from Pin1 to Pin13)



THERMAL CURVES

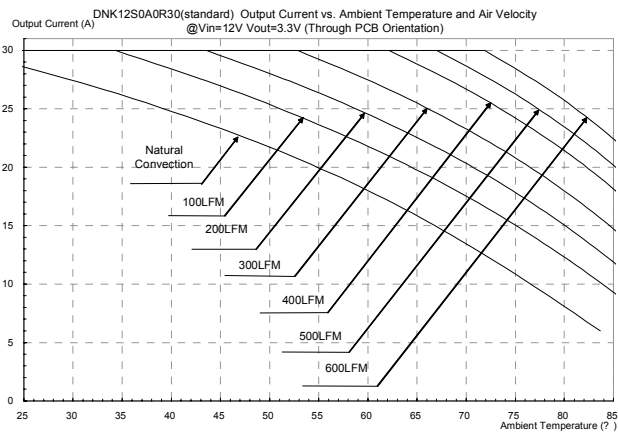


Figure 46: Output current vs. ambient temperature and air velocity @ Vin=12V, Vout=3.3V (Through PCB Orientation, Airflow from Pin1 to Pin13)

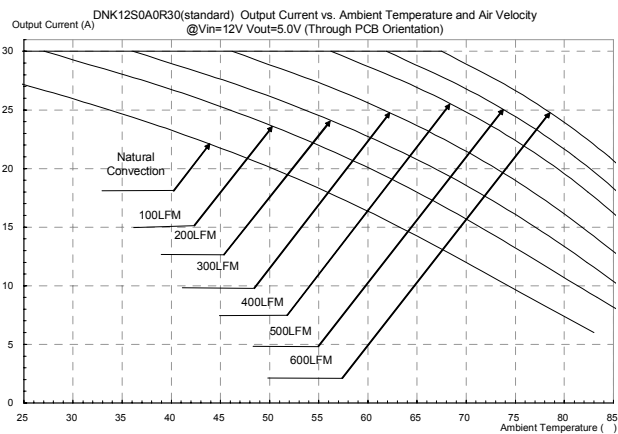
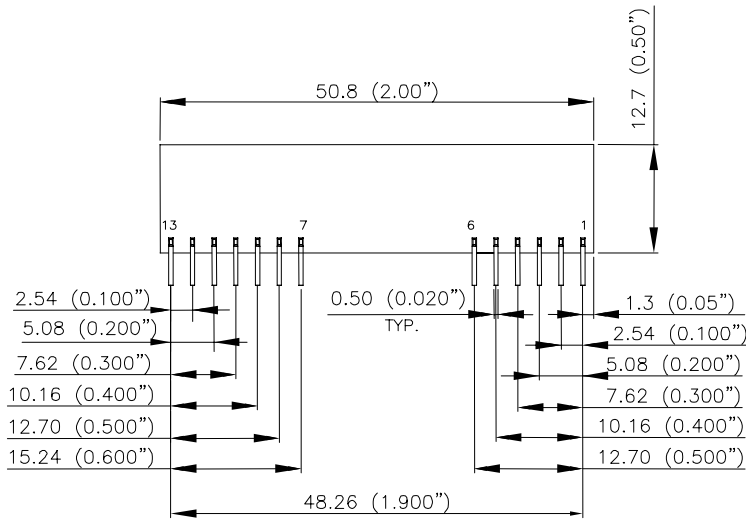


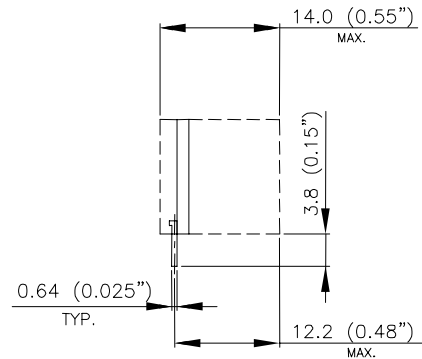
Figure 47: Output current vs. ambient temperature and air velocity @ Vin=12V, Vout=5.0V (Through PCB Orientation, Airflow from Pin1 to Pin13)



MECHANICAL DRAWING



BACK VIEW



SIDE VIEW

| PIN# | Function | PIN# | Function | PIN# | Function |
|------|----------------|------|-----------------|------|----------|
| 1 | V _o | 6 | GND | 11 | SEQ |
| 2 | V _o | 7 | SHARE | 12 | TRIM |
| 3 | SENSE(+) | 8 | GND | 13 | ON/OFF |
| 4 | V _o | 9 | V _{in} | | |
| 5 | GND | 10 | V _{in} | | |

NOTES:
 DIMENSIONS ARE IN MILLIMETERS AND (INCHES)
 TOLERANCES: X.Xmm±0.5mm(X.XX in.±0.02 in.)
 X.XXmm±0.25mm(X.XXX in.±0.010 in.)

* Pin 7 is optional

Note: All pins are copper alloy with Matte-tin(Pb free) plated over Nickel underplating.



PART NUMBERING SYSTEM

| DNK | 05 | S | 0A0 | R | 30 | N | F | A |
|----------------|---------------|-------------------|--------------------|--------------|----------------|--------------|---|---|
| Product Family | Input Voltage | Number of Outputs | Output Voltage | Package Type | Output Current | On/Off Logic | | Option Code |
| DNK - 30A | 05 - 4.5~5.5V | S - Single | 0A0 - Programmable | R - SIP | 30 - 30A | N - Negative | F- RoHS 6/6 (Lead Free) Space - RoHs 5/6 | A - Standard Function w/o current sharing B - with current sharing |

MODEL LIST

| Model Name | Package | Input Voltage | Output Voltage | Output Current | Efficiency 5Vin, 3.3Vout @ full load |
|-----------------|---------|---------------|----------------|----------------|---|
| DNK05S0A0R30NFA | SIP | 4.5V ~ 5.5Vdc | 0.8V ~ 3.63Vdc | 30A | 95% |

CONTACT: www.delta.com.tw/dcdc

USA:

Telephone:
 East Coast: 978-656-3993
 West Coast: 510-668-5100
 Fax: (978) 656 3964
 Email: DCDC@delta-corp.com

Europe:

Phone: +41 31 998 53 11
 Fax: +41 31 998 53 53
 Email: DCDC@delta-es.com

Asia & the rest of world:

Telephone: +886 3 4526107 ext 6220
 Fax: +886 3 4513485
 Email: DCDC@delta.com.tw

WARRANTY

Delta offers a two (2) year limited warranty. Complete warranty information is listed on our web site or is available upon request from Delta.

Information furnished by Delta is believed to be accurate and reliable. However, no responsibility is assumed by Delta for its use, nor for any infringements of patents or other rights of third parties, which may result from its use. No license is granted by implication or otherwise under any patent or patent rights of Delta. Delta reserves the right to revise these specifications at any time, without notice.